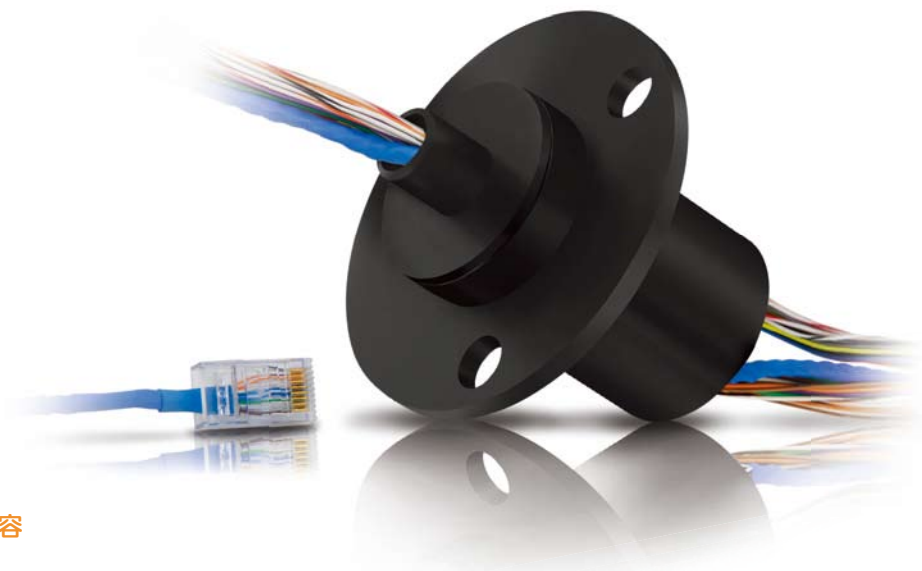


ESE SERIES

ESE 系列

系列說明總覽

- + 精簡膠囊型設計
- + 完全符合IEEE 802.3格式
- + 100Base-T / 1000Base-T 以太網電纜
- + T568B線路封端使用RJ45連接器
- + 高品質的黃金接點
- + 傳輸類比和數位訊號
- + 低電子雜訊
- + 高品質的黃金接點與數據總線協議的範圍相容
- + 同軸選項可選 RG178 / RG179迴路



Specifications 規範

ESE系列以太網電控滑環是一個旋轉組件用來傳輸電力以從固定入口或旋轉出口來控制電流或數據（類比/數位）。

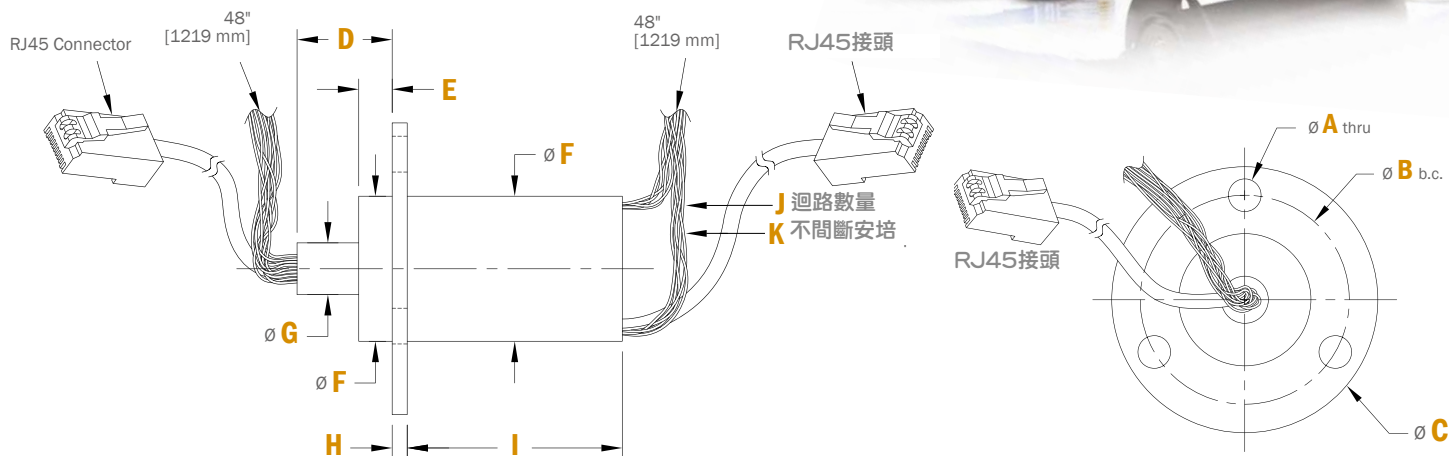
ESE系列電控滑環提供有2、5和10安培電源連接組合的100Base-T / 1000Base-T 以太網電纜連接。利用高性能的鍍金觸點，ESE系列具有低電子雜訊和利用RJ45連接器的以太網電纜封端。標準規格有8, 10, 12, 14, 18, 41, 43, 45, 47 和51迴路。

最高旋轉速度	持續旋轉250rpm
標準電控迴路選項	8, 10, 12, 14, 18, 41, 43, 45, 47, 51
電壓	240
安培 / 迴路	1 / 2 / 5 / 10
導程 / 尺寸類型	28/26 規格鍍銀銅，特氟龍
接點材質	黃金
溫度範圍	-40°F 到 176°F (-40°C 到 +80°C)

ESE SERIES

ESE 系列

Dimensions 尺寸



	ESE64	ESE264	ESE224	ESE2124	ESE284
A	.215" [5.46mm]	.215" [5.46mm]	.215" [5.46mm]	.215" [5.46mm]	.215" [5.46mm]
B	1.375" [34.93mm]	1.375" [34.93mm]	1.375" [34.93mm]	1.375" [34.93mm]	1.375" [34.93mm]
C	1.75" [44.45mm]	1.75" [44.45mm]	1.75" [44.45mm]	1.75" [44.45mm]	1.75" [44.45mm]
D	.57" [14.40mm]	.57" [14.48mm]	.57" [14.48mm]	.57" [14.48mm]	.57" [14.48mm]
E	.25" [6.35mm]	.25" [6.35mm]	.25" [6.35mm]	.25" [6.35mm]	.25" [6.35mm]
F	.87" [22.1mm]	.87" [22.10mm]	.87" [22.10mm]	.87" [22.10mm]	.87" [22.10mm]
G	.31" [7.87mm]	.31" [7.87mm]	.31" [7.87mm]	.31" [7.87mm]	.31" [7.87mm]
H	.09" [2.4mm]	.09" [2.36mm]	.09" [2.36mm]	.09" [2.36mm]	.09" [2.36mm]
I	.75" [19.05mm]	1.02" [25.91mm]	1.02" [25.91mm]	1.29" [32.77mm]	1.29" [32.77mm]
J	10 Circuits	12 Circuits	8 Circuits	18 Circuits	14 Circuits
K	(6x) 2 Amps (1x) 100Base-T*	(2x) 5 Amps (6x) 2 Amps (1x) 100Base-T*	(2x) 10 Amps (2x) 2 Amps (1x) 100Base-T*	(2x) 5 Amps (12x) 2 Amps (1x) 100Base-T*	(2x) 10 Amps (8x) 2 Amps (1x) 100Base-T*

	ESE438	ESE4358	ESE2358	ESE8278	ESE24278
A	.220" [5.58mm]	.220" [5.58mm]	.220" [5.58mm]	.220" [5.58mm]	.220" [5.58mm]
B	1.410" [35.80mm]	1.410" [35.80mm]	1.410" [35.80mm]	1.410" [35.80mm]	1.410" [35.80mm]
C	1.75" [44.45mm]	1.75" [44.45mm]	1.75" [44.45mm]	1.75" [44.45mm]	1.75" [44.45mm]
D	.48" [12.19mm]	.48" [12.19mm]	.48" [12.19mm]	.48" [12.19mm]	.48" [12.19mm]
E	.11" [2.80mm]	.11" [2.80mm]	.11" [2.80mm]	.11" [2.80mm]	.11" [2.80mm]
F	1.00" [25.40mm]	1.00" [25.40mm]	1.00" [25.40mm]	1.00" [25.40mm]	1.00" [25.40mm]
G	.38" [9.52mm]	.38" [9.52mm]	.38" [9.52mm]	.38" [9.52mm]	.38" [9.52mm]
H	.06" [1.9mm]	.06" [1.9mm]	.06" [1.9mm]	.06" [1.9mm]	.06" [1.9mm]
I	2.96" [75.3mm]	2.96" [75.3mm]	2.96" [75.3mm]	2.96" [75.3mm]	2.96" [75.3mm]
J	51 Circuits	47 Circuits	45 Circuits	43 Circuits	41 Circuits
K	(43x) 2 Amps (1x) 1000Base-T*	(4x) 5 Amps (35x) 2 Amps (1x) 1000Base-T*	(2x) 10 Amps (35x) 2 Amps (1x) 1000Base-T*	(8x) 5 Amps (27x) 2 Amps (1x) 1000Base-T*	(2x) 10 Amps (4x) 5 Amps (27x) 2 Amps (1x) 1000Base-T*

ESE SERIES

ESE 系列

100Base-T 以太網電纜電控線顏色編碼

28電流 1000-T = 1 安培最大訊號；第五種類電線

ESE64		
Tag #	Color	Description/Awg
1	ORN	100_T/28/ Twisted Pair
2	WHT-ORN	
3	GRN	100_T/28/ Twisted Pair
4	WHT-GRN	
5	BLK	2A/26
6	BRN	
7	RED	
8	ORN	
9	YEL	
10	GRN	

ESE264		
Tag #	Color	Description/Awg
1	ORN	100_T/28/ Twisted Pair
2	WHT-ORN	
3	GRN	100_T/28/ Twisted Pair
4	WHT-GRN	
5	BLK	5A/20
6	BRN	
7	BLK	2A/26
8	BRN	
9	RED	
10	ORN	
11	YEL	
12	GRN	

ESE284		
Tag #	Color	Description/Awg
1	ORN	100_T/28/ Twisted Pair
2	WHT-ORN	
3	GRN	100_T/28/ Twisted Pair
4	WHT-GRN	
5	BLK	10A/16
6	BRN	
7	BLK	2A/26
8	BRN	
9	RED	
10	ORN	
11	YEL	
12	GRN	
13	BLU	
14	VIO	

ESE2124		
Tag #	Color	Description/Awg
1	ORN	100_T/28/ Twisted Pair
2	WHT-ORN	
3	GRN	100_T/28/ Twisted Pair
4	WHT-GRN	
5	BLK	5A/20
6	BRN	
7	BLK	2A/26
8	BRN	
9	RED	
10	ORN	
11	YEL	
12	GRN	
13	BLU	
14	VIO	
15	GRY	
16	WHT	
17	WHT-BLK	
18	WHT-BRN	

ESE224		
Tag #	Color	Description/Awg
1	ORN	100_T/28/ Twisted Pair
2	WHT-ORN	
3	GRN	100_T/28/ Twisted Pair
4	WHT-GRN	
5	BLK	10A/16
6	BRN	
7	RED	2A/26
8	ORN	

ESE SERIES

ESE 系列

1000Base-T 以太網電纜電控線顏色編碼

28電流 1000-T = 1 安培最大訊號；第五種類電線

ESE438		
Tag #	Color	Description/Awg
1	BLK	2A/26
2	BRN	
3	RED	
4	ORN	
5	YEL	
6	GRN	
7	BLU	
8	VIO	
9	GRY	
10	WHT	
11	WHT-BLK	
12	WHT-BRN	
13	WHT-RED	
14	WHT-ORN	
15	BLK	2A/26
16	BRN	
17	RED	
18	ORN	
19	YEL	
20	GRN	
21	BLU	
22	VIO	
23	GRY	
24	WHT	
25	WHT-BLK	
26	WHT-BRN	
27	WHT-RED	
28	WHT-ORN	
29	ORN	1000_T/28/ Twisted Pair
	WHT-ORN	1000_T/28/ Twisted Pair
	GRN	1000_T/28/ Twisted Pair
	WHT-GRN	1000_T/28/ Twisted Pair
	BLU	1000_T/28/ Twisted Pair
	WHT-BLU	1000_T/28/ Twisted Pair
	BRN	1000_T/28/ Twisted Pair
WHT-BRN	1000_T/28/ Twisted Pair	

37	BLK	2A/26
38	BLK	
39	BRN	
40	RED	
41	ORN	
42	YEL	
43	GRN	
44	BLU	
45	VIO	
46	GRY	
47	WHT	
48	WHT-BLK	
49	WHT-BRN	
50	WHT-RED	
51	ESE	

ESE4358		
Tag #	Color	Description/Awg
1	BLK	2A/26
2	BRN	
3	RED	
4	ORN	
5	YEL	
6	GRN	
7	BLU	
8	VIO	
9	GRY	
10	WHT	
11	WHT-BLK	
12	WHT-BRN	
13	WHT-RED	
14	WHT-ORN	
15	BLK	5A/20
16	BRN	
17	RED	
18	ORN	
19	BLK	2A/26
20	BRN	
21	RED	
22	ORN	
23	YEL	
24	GRN	
25	ORN	1000_T/28/ Twisted Pair
	WHT-ORN	1000_T/28/ Twisted Pair
	GRN	1000_T/28/ Twisted Pair
	WHT-GRN	1000_T/28/ Twisted Pair
	BLU	1000_T/28/ Twisted Pair
	WHT-BLU	1000_T/28/ Twisted Pair
	BRN	1000_T/28/ Twisted Pair
	WHT-BRN	1000_T/28/ Twisted Pair

33	BLK	2A/26
34	BLK	
35	BRN	
36	RED	
37	ORN	
38	YEL	
39	GRN	
40	BLU	
41	VIO	
42	GRY	
43	WHT	
44	WHT-BLK	
45	WHT-BRN	
46	WHT-RED	
47	WHT-ORN	

丹耀貿易有限公司

ESE SERIES

ESE 系列

1000Base-T 以太網電纜電控線顏色編碼

28電流 1000-T = 1 安培最大訊號；第五種類電線

ESE2358		
Tag #	Color	Description/Awg
1	BLK	2A/26
2	BRN	
3	RED	
4	ORN	
5	YEL	
6	GRN	
7	BLU	
8	VIO	
9	GRY	
10	WHT	
11	WHT-BLK	
12	WHT-BRN	
13	WHT-RED	
14	WHT-ORN	
15	BLK	10A/16
16	BRN	2A/26
17	BLK	
18	BRN	
19	RED	
20	ORN	
21	YEL	
22	GRN	
23	ORN	1000_T/28/ Twisted Pair
	WHT-ORN	1000_T/28/ Twisted Pair
	GRN	1000_T/28/ Twisted Pair
	WHT-GRN	1000_T/28/ Twisted Pair
	BLU	1000_T/28/ Twisted Pair
	WHT-BLU	1000_T/28/ Twisted Pair
	BRN	1000_T/28/ Twisted Pair
WHT-BRN	1000_T/28/ Twisted Pair	

31	BLK	2A/26
32	BLK	
33	BRN	
34	RED	
35	ORN	
36	YEL	
37	GRN	
38	BLU	
39	VIO	
40	GRY	
41	WHT	
42	WHT-BLK	
43	WHT-BRN	
44	WHT-RED	
45	WHT-ORN	

ESE8278			
Tag #	Color	Description/Awg	
1	BLK	5A/20	
2	BRN		
3	RED		
4	ORN		
5	BLK	2A/26	
6	BRN		
7	RED		
8	ORN		
9	YEL	5A/20	
10	GRN		
11	BLK		
12	BRN		
13	RED	2A/26	
14	ORN		
15	BLK		
16	BRN		
17	RED	1000_T/28/ Twisted Pair	
18	ORN		
19	YEL		
20	GRN		
21	ORN		1000_T/28/ Twisted Pair
	WHT-ORN		1000_T/28/ Twisted Pair
	GRN		1000_T/28/ Twisted Pair
	WHT-GRN	1000_T/28/ Twisted Pair	
	BLU	1000_T/28/ Twisted Pair	
WHT-BLU	1000_T/28/ Twisted Pair		
BRN	1000_T/28/ Twisted Pair		
WHT-BRN	1000_T/28/ Twisted Pair		

29	BLK	2A/26
30	BLK	
31	BRN	
32	RED	
33	ORN	
34	YEL	
35	GRN	
36	BLU	
37	VIO	
38	GRY	
39	WHT	
40	WHT-BLK	
41	WHT-BRN	
42	WHT-RED	
43	WHT-ORN	

ESE SERIES

ESE 系列

1000Base-T 以太網電纜電控線顏色編碼

28電流 1000-T = 1 安培最大訊號；第五種類電線

ESE24278					
Tag #	Color	Description/Awg			
1	BLK	5A/20			
2	BRN				
3	RED				
4	ORN				
5	BLK	2A/26			
6	BRN				
7	RED				
8	ORN				
9	YEL				
10	GRN	10A/16			
11	BLK				
12	BRN				
13	BLK	2A/26			
14	BRN				
15	RED				
16	ORN				
17	YEL				
18	GRN				
19	ORN	1000_T/28/ Twisted Pair	27	BLK	2A/26
	WHT-ORN	Twisted Pair	28	BLK	
	GRN	1000_T/28/ Twisted Pair	29	BRN	
	WHT-GRN	Twisted Pair	30	RED	
	BLU	1000_T/28/ Twisted Pair	31	ORN	
	WHT-BLU	Twisted Pair	32	YEL	
	BRN	1000_T/28/ Twisted Pair	33	GRN	
WHT-BRN	Twisted Pair	34	BLU		
		35	VIO		
		36	GRY		
		37	WHT		
		38	WHT-BLK		
		39	WHT-BRN		
		40	WHT-RED		
		41	WHT-ORN		